



ASSET LIFE EXPERT (ALEX) YOUR INTELLIGENT ASSISTANT FOR SEAMLESS PLANT AVAILABILITY

DIGITAL ASSISTANCE FOR YOUR STEEL PLANT

SUPPORTIVE, CONNECTED, & LEARNING

THE CHALLENGE

The last few decades have seen steel plants add more and more sensors and systems so that more and more data can be collected and analyzed. The objective is clear: by gathering more data, plants can gain more valuable insights about the current “health status” of their systems, and as a result production can be optimized in terms of quality, productivity, and flexibility. It’s all about remaining competitive in the global steel market.

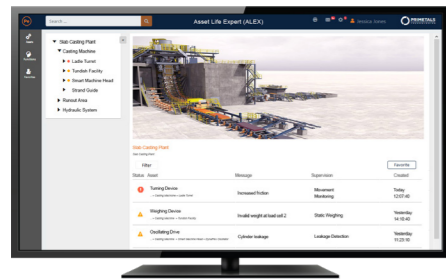
The collection of “big data” has been facilitated by a dramatic drop in the cost of hard drives and solid-state drives. But the wealth of systems, information, and alerts can no longer be handled by humans alone—not even by experienced operators or maintenance engineers. The growing connectivity of different aggregates in a steel plant also increases the complexity of collected information and adds unseen interdependencies between data sets.

THE SOLUTION: ASSET LIFE EXPERT (ALEX)

Primetals Technologies has developed an intelligent digital assistant called Asset Life Expert (ALEX) specifically to assist operators and maintenance engineers in the proper management of the sea of data and alerts within a steel plant.

ALEX can assist at:

- Blast furnaces
- Converters
- Electric arc furnaces
- Continuous casting machines
- Plate and hot strip mills
- Cold rolling mills
- High-speed rod, wire, bar and section rolling mills
- Process lines
- Dry dedusting systems
- and more



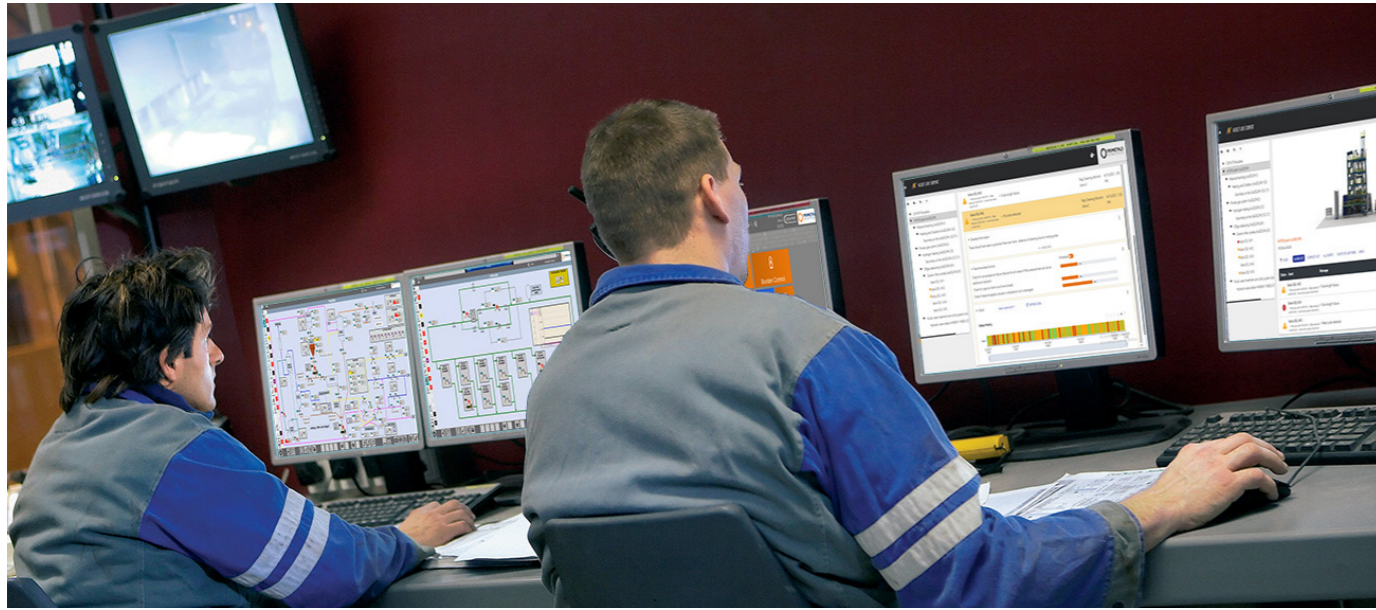
ALEX from Primetals Technologies is a smart, centralized expert system that provides your operators with digital assistance and increases the availability of your steel plant.

WHERE ALEX CAN ASSIST YOU IN YOUR STEEL PLANT:

- Monitoring mechanical equipment, like a looper, coiler, or edger in a hot strip mill, influencing material quality
- Monitoring hydraulic systems, like a wear of servo valves or loss of pressure in the accumulator, ultimately influencing product quality
- Monitoring control loops which can lose their dynamic behaviors and cause a drop in product performance
- Monitoring of slow-rotating bearings, e.g. as used for steelmaking converters and ladle turrets, that can significantly influence productivity
- Supervising smaller drives of bearings such as those in processing lines by analyzing the motor current
- Classical vibration monitoring for rotating parts, automatically monitored or via input of manual measurements
- Monitoring of process KPIs such as strip thickness deviations caused by work roll eccentricity
- Monitoring of automation equipment such as CPU load, memory space, run time, bus system check, and so on
- And many others



ASSET LIFE EXPERT (ALEX) YOUR INTELLIGENT ASSISTANT FOR SEAMLESS PLANT AVAILABILITY



Asset Life Expert (ALEX) from Primetals Technologies helps operators to manage the huge amount of alarms and warnings in a steel plant.

SOLUTION

ALEX acts as a smart, centralized expert system for intelligent condition monitoring including e.g. also classical vibration monitoring.

ALEX digitalizes know-how based on plant operation practice, so that users benefit from Primetals Technologies' automation, production process, and metallurgical expertise.

ALEX guides and assists operators and maintenance engineers through their daily tasks, offering clear status information and recommending intelligent actions.

ALEX can be integrated with various traditional condition monitoring systems and other data sources.

CHARACTERISTICS

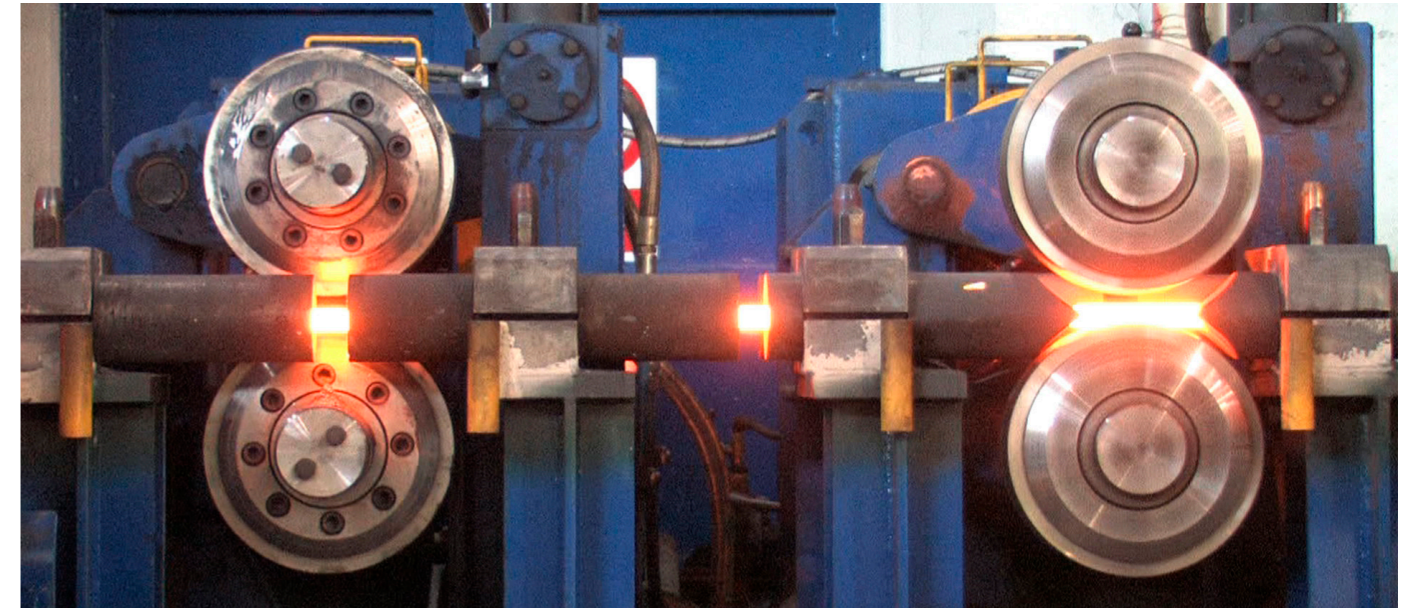
- **Intuitive:** provides status information in a clear, user-friendly way, including online plant health status and full mobile access
- **Connected:** interconnects different steel plants and visualize information in one central system
- **Communicative:** offers standardized interfaces to other systems, e.g. ITR vibration analyses or 3rd party systems
- **Supportive:** recommends intelligent actions and provide information that combines the plant operation experience and expertise of Primetals Technologies based on advanced analysis techniques

- **Learning:** allows users to contribute their own know-how
- **Reliable:** intervenes only when needed
- **Scalable:** based on a modular concept with functionalities that can be continuously updated and extended by Primetals Technologies

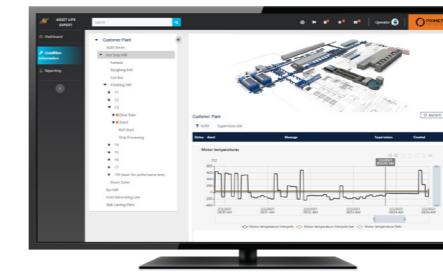
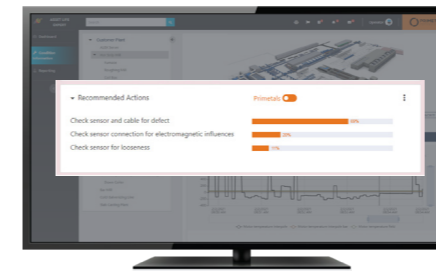
BENEFITS

- **Fast and easy access** to information about the condition of one or more plants via one central system
- **Direct access to numerous condition monitoring evaluation packages** from Primetals Technologies and other data sources
- **Precise and validated status information** about monitored equipment and processes
- **Intelligent support for defining fast actions** to properly handle alarms and warnings
- **24/7 available digitalized know-how** of experienced senior operators and Primetals Technologies
- **Quick document access** linking monitoring functions to relevant information
- **Attractive benefit-cost ratio** with flexible expansion options

SUCCESS STORY ONE HOUR PLANNED WORK PREVENTS A SEVEN-HOUR LOSS OF PRODUCTION



The ALEX installation at a hot strip mill in Mexico warned the maintenance department of an inaccuracy in the roll force measurement, recommended to calibrate the measurement system and prevented a production loss of seven hours.



Scenario

ALEX warned the maintenance department of an inaccuracy in the roll force measurement. By automatically analyzing the sensor readings in ALEX, an abnormal offset in the force signal was found. ALEX provided the correct recommendation to calibrate the measurement system.

The work was scheduled and completed during the next planned maintenance stop. One single hour of planned work prevented a production loss of seven hours.

Results

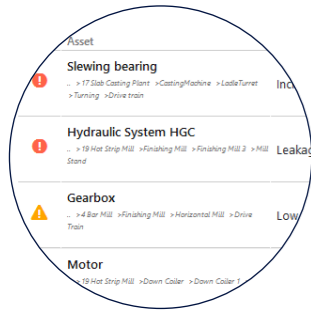
- Detection of incorrect motor behavior caused by a broken temperature sensor
- Bearing abnormalities of a newly installed work roll, which caused problems controlling strip thickness
- Memory overflow error in a server was detected early—meaning that the server remained in a healthy state.
- A logical error was found in the existing automation and fixed after an analysis.

Added values

What the operators of the hot strip mill valued most about the installation of ALEX:

- Easy to use and intuitive
- Useful monitoring functions
- Immediate warning and recommended actions when problems are detected

HOW ASSET LIFE EXPERT (ALEX) CAN HELP YOU TO INCREASE PLANT AVAILABILITY AND REDUCE MAINTENANCE COSTS



ALARMS AND WARNINGS

As a steel plant operator you might be frequently overwhelmed by a steady stream of alarms and warnings from various sources.

SMART CENTRALIZED EXPERT SYSTEM

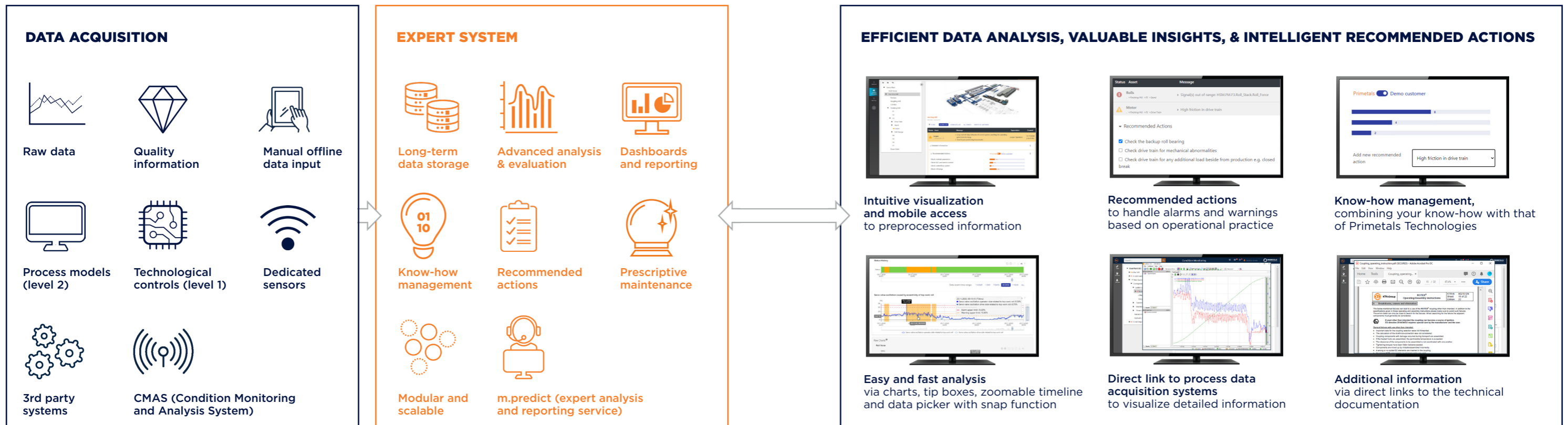
ALEX evaluates these alarms and warnings using advanced analysis techniques, factoring in additional signals and information such as operational practice know-how, and provides a clearer and faster overview of the condition of your plants.

DIGITAL ASSISTANCE

ALEX provides a fast overview of the status of your plants, with precise and validated information. ALEX recommends intelligent actions that help you to avoid unplanned downtimes and achieve consistently high product quality.

IMPROVED LIFE QUALITY OF YOUR ASSETS

ALEX increases your plant availability, reduces maintenance costs, provides online information about the health status of your plant, and helps you to optimize equipment lifetime.



ASSET LIFE EXPERT (ALEX)

Primetals Technologies Austria GmbH

A Group Company of Mitsubishi Heavy Industries

Turmstrasse 44
4031 Linz
Austria

[primetals.com](https://www.primetals.com)

Brochure No.: T10-1-N743-L9-P-V2-EN

Printed in Austria

© 2023 Primetals Technologies Ltd. All rights reserved

The information (including, e.g., figures and numbers) provided in this document contains merely general descriptions or characteristics of performance based on estimates and assumptions which have not been verified. These estimates and assumptions have to be analyzed on a case-to-case basis and might change as a result of further product development.

It is no representation, does not constitute and/or evidence a contract or an offer to enter into a contract to any extent and is not binding upon the parties. Any obligation to provide and/or demonstrate respective characteristics shall only exist if expressly agreed in the terms of the contract.

Primetals Technologies excludes any liability whatsoever under or in connection with any provided information, estimates and assumptions. The provided information estimates and assumptions shall be without prejudice to any possible future offer and/or contract.

Any information provided by Primetals Technologies to the recipient shall be subject to applicable confidentiality obligations and shall be used by the recipient at their own convenience and at their sole risk.

Primetals is a trademark of Primetals Technologies Ltd.